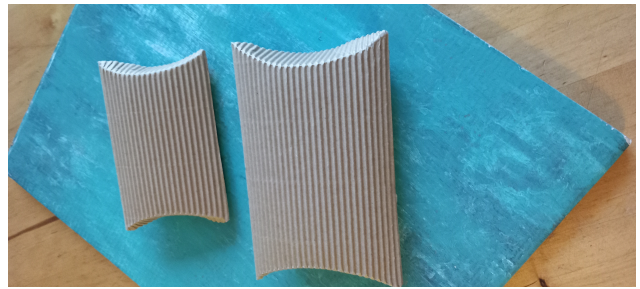
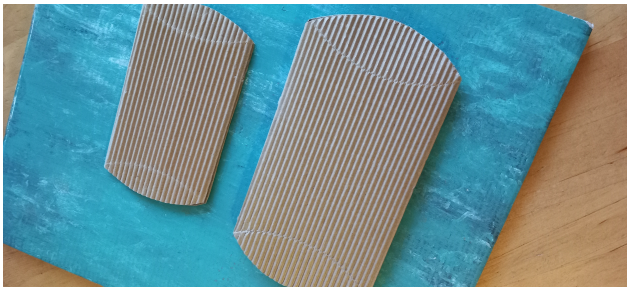


Pillow box gift boxes

Templates & instructions for large & small versions

small = 10 cm long (closed)

large = 12 cm long (closed)



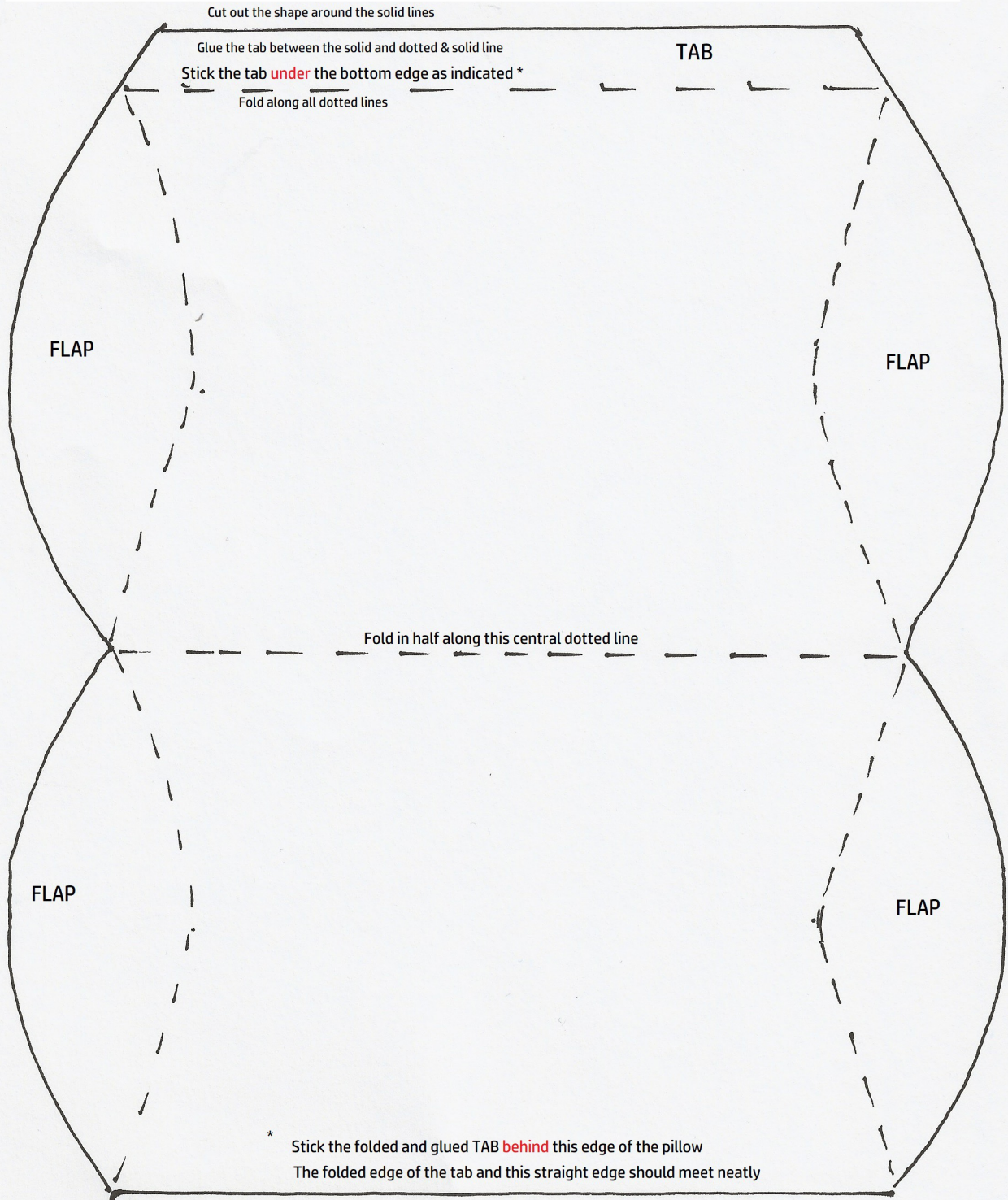
Have fun & happy gifting!

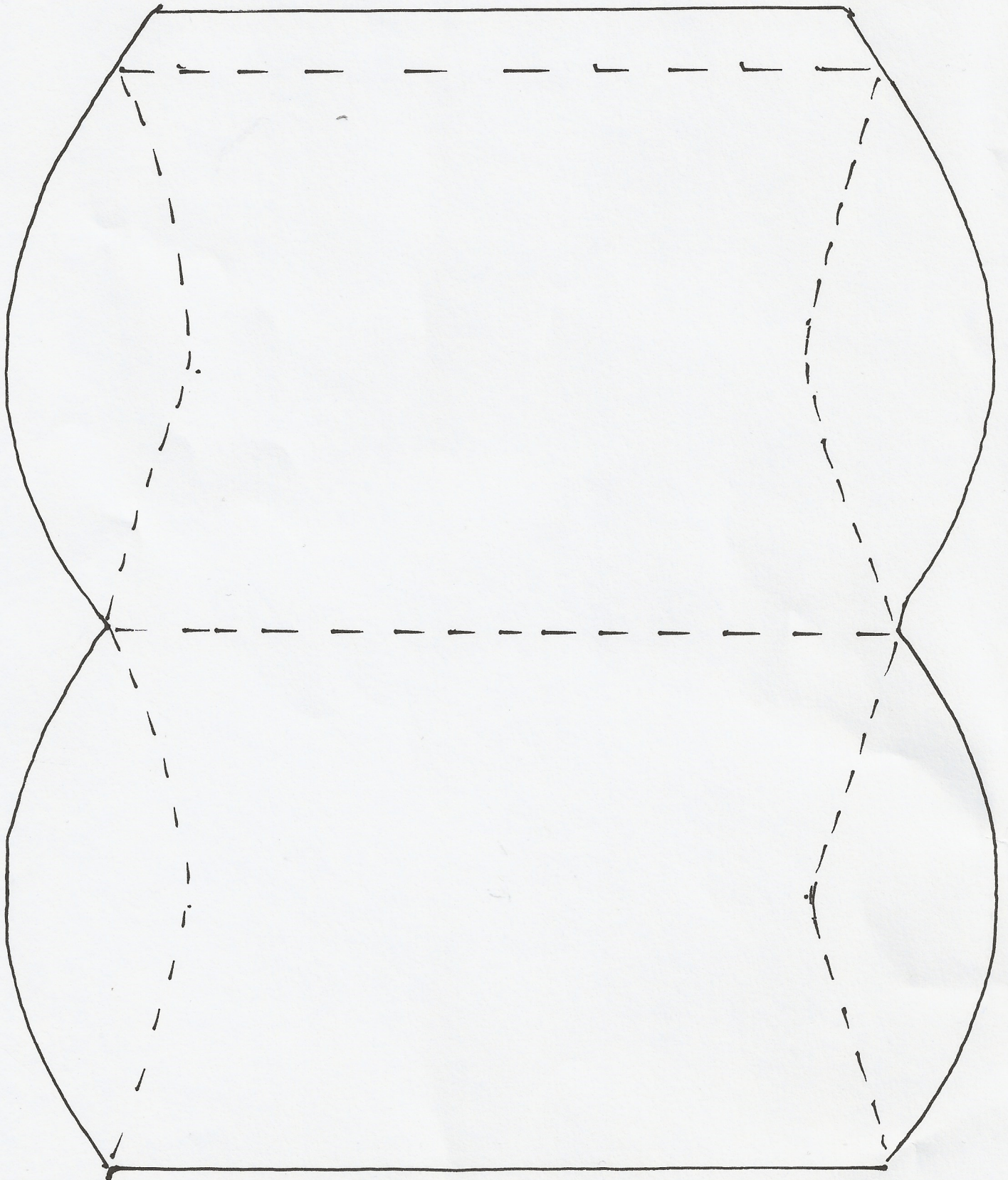
Pillow box gift boxes, large & small
Template & instructions

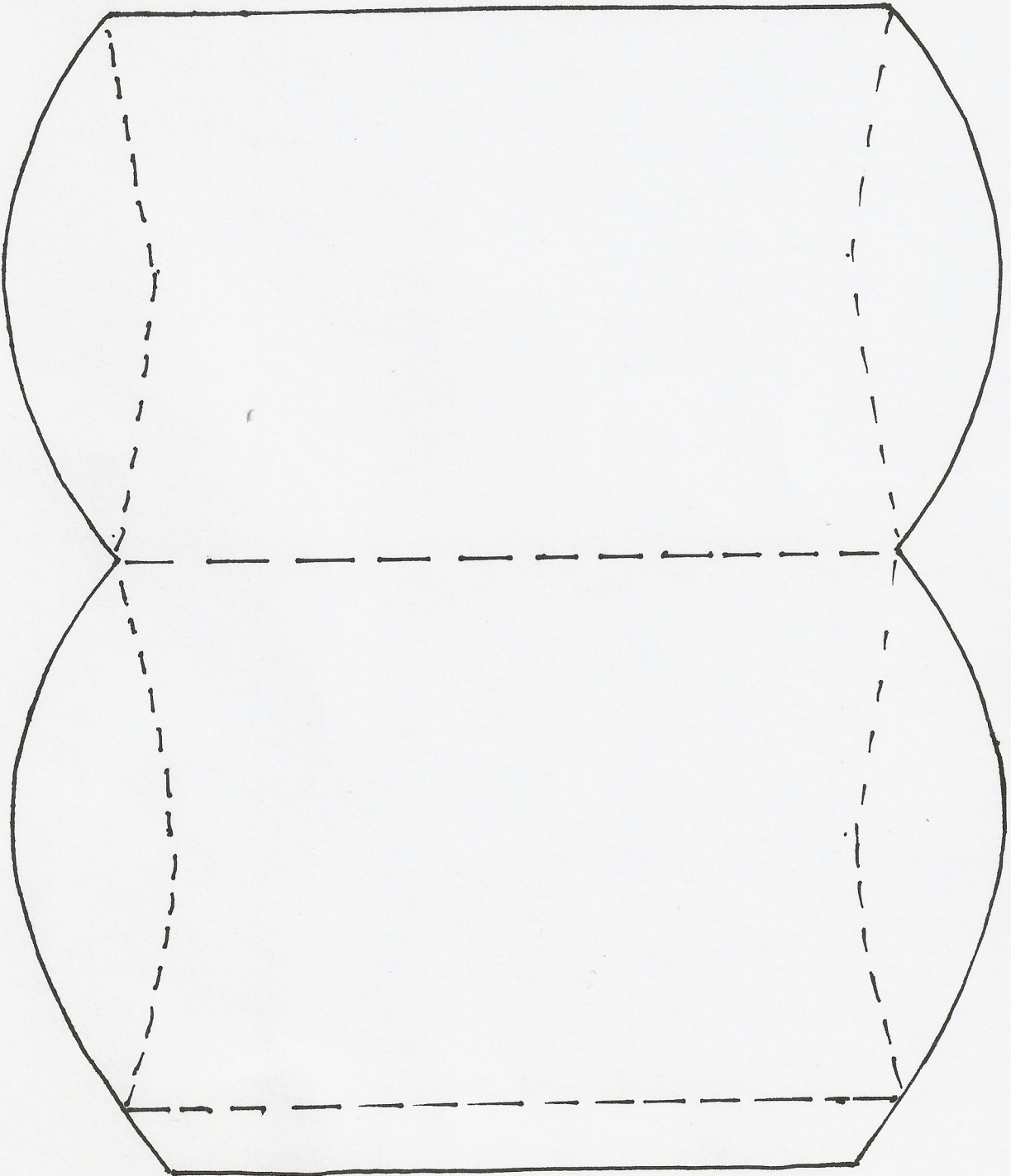
You will need: Scissors, glue, paper folder (or back of blunt knife), A4 (cardstock (can be plain or corrugated or patterned)). *Optional:* felt tip pens, decorative stamps for decorating plain cardstock

Method: Cut all around the outer edge of the template & then transfer the shape to your chosen cardstock. Use the pointed end of the paper folder (or knife) to mark the dotted lines on your cardstock.

Carefully score the dotted lines on your cardstock. Fold the box along the central line, wrong sides together. Fold the tab along the dotted line, wrong sides together. Add glue on the outside of the tab and attach it to the other edge of the box, neatly aligning folded edge of tab with straight edge of box. When the glue is dry you can open the box into its pillow shape, folding in the shaped flaps at either end to close the box. Add stickers or a ribbon to retain the shape when gifting.







Pillow box gift boxes, large & small Template & instructions

You will need: Scissors, glue, paper folder (or back of blunt knife), A4 (cardstock (can be plain or corrugated or patterned)). *Optional:* felt tip pens, decorative stamps for decorating plain cardstock

Method: Cut all around the outer edge of the template & then transfer the shape to your chosen cardstock. Use the pointed end of the paper folder (or knife) to mark the dotted lines on your cardstock.

Carefully score the dotted lines on your cardstock. Fold the box along the central line, wrong sides together. Fold the tab along the dotted line, wrong sides together. Add glue on the outside of the tab and attach it to the other edge of the box, neatly aligning folded edge of tab with straight edge of box. When the glue is dry you can open the box into its pillow shape, folding in the shaped flaps at either end to close the box. Add stickers or a ribbon to retain the shape when gifting.